

## JK P SERIES OF POLYMER PTC RESETTABLE FUSE SPECIFICATION

Appearance of Products :

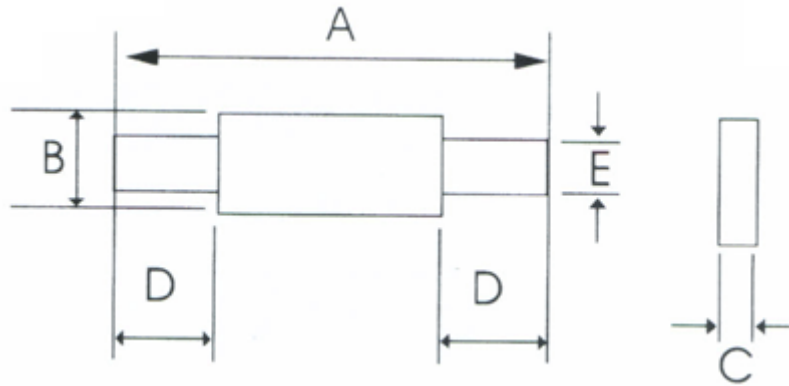


Figure 1

**Electrical characteristics (25°C)**

Model	Vmax (V)	Imax (A)	Ih (A)	Rmax (Ω)	Rmin (Ω)	Pd (W)
JK-P120	15	100	1.20	0.085	5.0	1.2
JK-P175	15	100	1.75	0.050	4.0	1.5
JK-P180	24	100	1.80	0.040	3.0	2.0
JK-P200	30	100	2.00	0.030	4.0	2.1
JK-P260	24	100	2.60	0.025	5.0	2.3
JK-P300	24	100	3.00	0.015	4.0	2.5
JK-P350	30	100	3.50	0.017	3.0	2.5
JK-P420	30	100	4.20	0.012	6.0	2.9

**Product dimensions (mm)**

Model	A		B		C		D		E	
	min	max	min	max	min	max	min	max	min	max
JK-P120	19.9	22.1	4.90	5.60	0.6	1.0	5.5	7.5	3.9	4.1
JK-P175	20.9	23.1	4.90	5.60	0.6	1.0	4.1	5.5	3.9	4.1
JK-P180	24.0	26	4.90	5.60	0.6	1.0	4.1	5.5	3.9	4.1
JK-P200	21.3	23.4	10.2	11.0	0.5	1.1	5.0	7.6	4.8	5.4
JK-P260	24.0	26.0	10.8	11.9	0.6	1.0	5.0	7.0	5.9	6.1
JK-P300	28.4	31.8	13.0	13.5	0.5	1.1	6.3	8.9	6.0	6.6
JK-P350	28.4	31.8	13.0	13.5	0.5	1.1	6.3	8.9	6.0	6.6
JK-P420	30.6	32.4	12.9	13.6	0.5	1.1	5.0	7.5	6.0	6.7